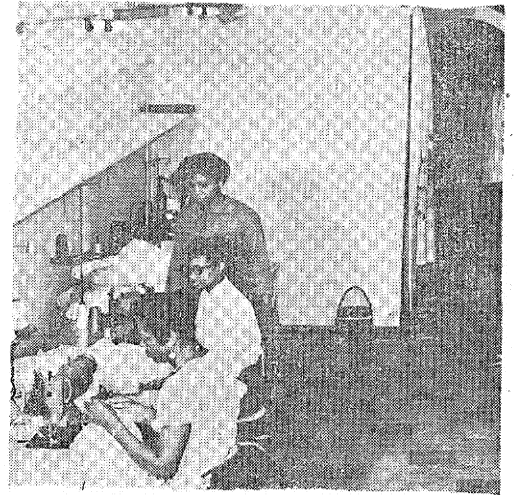


New Fashion Center Sets New Patterns



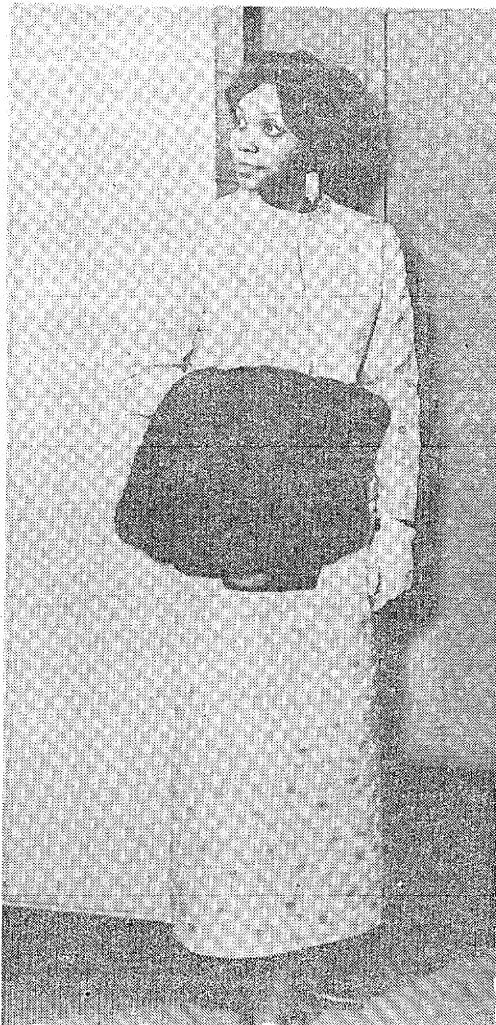
Garments are under close supervision and check from the cutting table to the sewing power operators. The factory is equipped with the latest cutting machines and power machines. The factory is laid out on a departmental base with sections for pattern selections, fittings, designing, cutting and machine operating.



Machine operators are constantly checked by supervisor to insure quality work. Temple No. 2 Factory is so concerned about its work that no garment with a defect will be passed by clothing inspectors. Every stitch, button and seam must be in place. Workers not meeting up to performance standards are dismissed. The factory does work from its own designs and from patrons demand perfection in garment making.



Quality Clothing



Least cost elegant wear is proper in maintaining appearance during maternity. Charleszetta Sharrieff wears bodice in orange embroidered organzettep with a base orange velvet free-swinging skirt. The price of garments at Temple No. 2 Factory Shop is within reach of everyone. Even the housewife with a small allowance.



Brocade is durable and lasting. Ethel Sharieff's design using flowered print adds a rich feminine angle of appearance. The jacket collar is tapered off without overflowing ends. Mary Betha carries a mink stole as a wrap-around for stepping out into chilled air. Long earrings accentuate the slimness of wear and garment. Proper looking is always good grooming.



Exclusively Made

